



RE/MAX Lakes Realty provides these covenants/bylaws/horizontal property regime declarations as a convenience, and in no way guarantees the accuracy of these documents, and in no way represents that these documents are up to date and/or legally binding. It is the responsibility of any potential buyer, seller, investor, and/or real estate agent to contact any association contact and/or the Dickinson County recorder's office in order to satisfy themselves as to the very latest available documents.

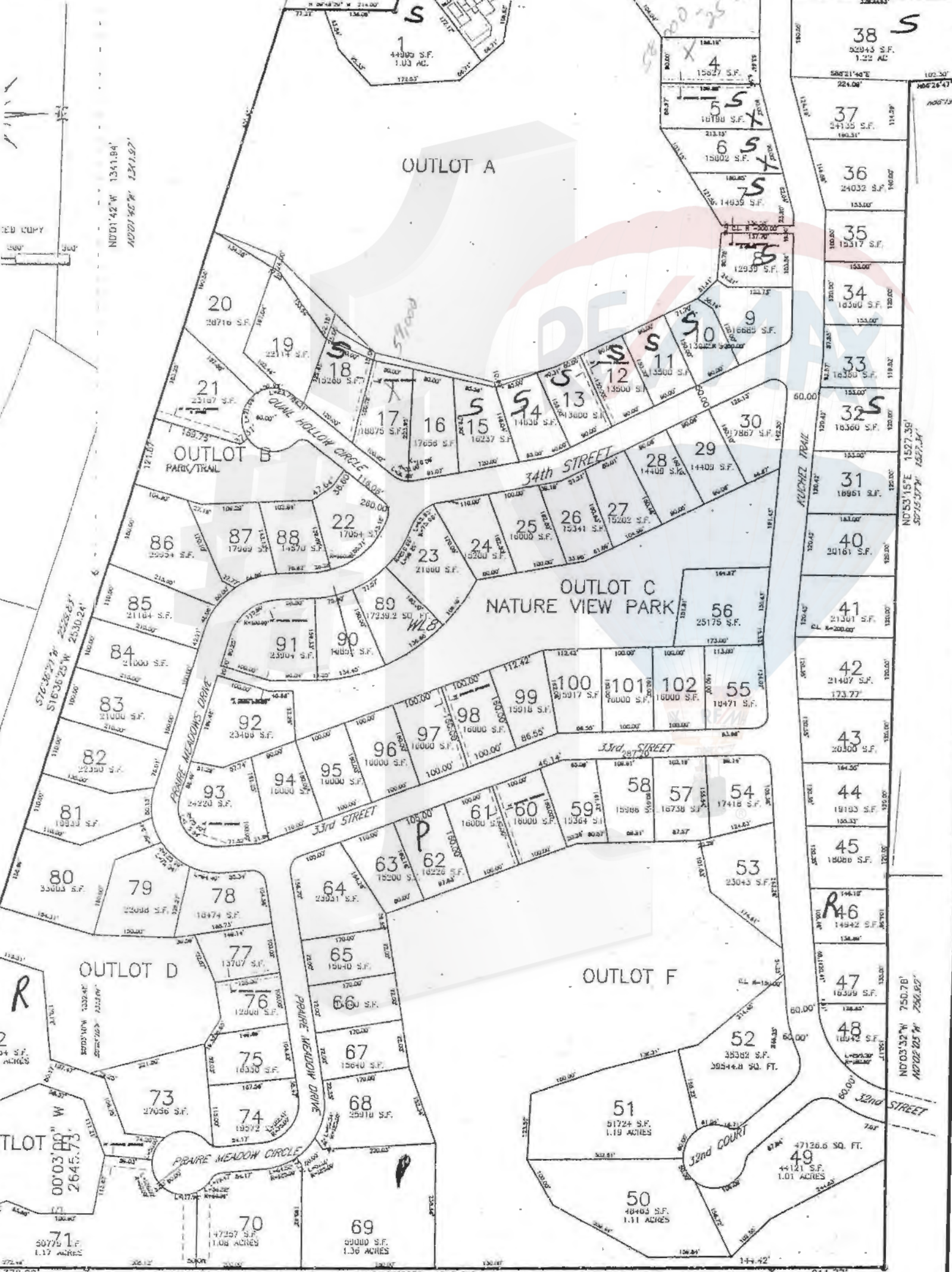
These documents are the property of Sellboji.com, BojiHomes.com and RE/MAX Lakes Realty. The downloading of these documents for use by any other Real Estate Agency is strictly prohibited.

LES MAP ONLY. FINAL LOT SIZES & AREAS MAY CHANGE.  
 YERS NEED TO REFER TO FINAL PLAT

39	38	37	36	SOUTH EMERALD HILLS	35	34	33	32	31
126.00'	126.00'	126.00'	126.00'		126.00'	126.00'	126.00'	126.00'	126.00'
S 89°48'39" E 200.00'									

D  
 5' NOTED  
 3 REBAR L.S. 9179  
 2 REBAR L.S. 9179  
 1/2 BEARING

RED COPY  
 300'



378.29' 378.22'  
 NOTED OTHERWISE  
 EMP. TURN AROUND  
 RE PROVIDED A

N89°38'33"E 1317.84'  
 N89°37'52"E 1317.57'

211.77'  
 N89°34'07"E  
 S89°37'52"W  
 211.88'

SALES MAP  
 END